

# Human CLEC9A Protein

Cat. No. CLE-HM29A

## Description

<b>Source</b>	Recombinant Human CLEC9A Protein is expressed from HEK293 with hFc tag at the N-Terminus. It contains Lys57-Val241.
<b>Accession</b>	Q6UXN8
<b>Molecular Weight</b>	The protein has a predicted MW of 48.5 kDa. Due to glycosylation, the protein migrates to 55-65 kDa based on Bis-Tris PAGE result.
<b>Endotoxin</b>	Less than 1EU per µg by the LAL method.
<b>Purity</b>	> 95% as determined by Bis-Tris PAGE > 95% as determined by HPLC

## Formulation and Storage

<b>Formulation</b>	Lyophilized from 0.22µm filtered solution in PBS (pH 7.4). Normally 8% trehalose is added as protectant before lyophilization.
<b>Reconstitution</b>	Centrifuge the tube before opening. Reconstituting to a concentration more than 100 µg/ml is recommended. Dissolve the lyophilized protein in distilled water.
<b>Storage</b>	-20 to -80°C for 12 months as supplied from date of receipt. -80°C for 3 months after reconstitution. Recommend to aliquot the protein into smaller quantities for optimal storage. Please minimize freeze-thaw cycles.

## Background

CLEC9A expression was significantly higher in psoriatic skin compared with healthy donor. In psoriatic skin and PsA ST, CLEC9A(+) cells were in close proximity to TUNEL(+) cells. SF CLEC9A levels were significantly lower compared with paired PsA serum. Adalimumab treatment did not affect CLEC9A serum level and skin expression. The downregulation of synovial CLEC9A might be associated with a novel mechanism by which anti-TNF therapy might reduce CD8-mediated inflammation in PsA patients.

## Assay Data

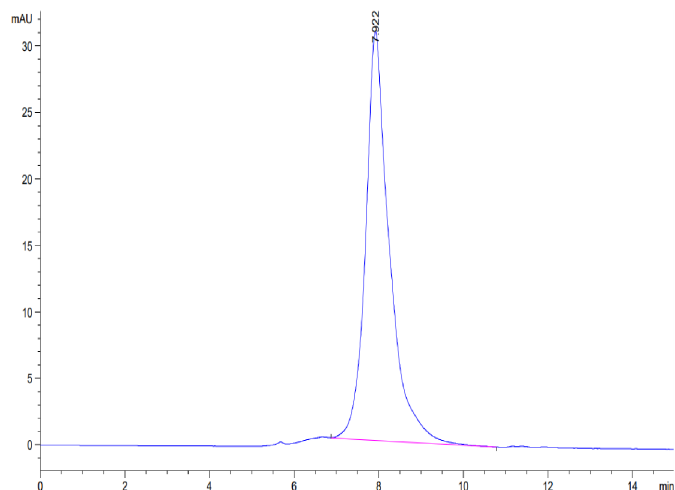
### Bis-Tris PAGE



Human CLEC9A on Bis-Tris PAGE under reduced condition. The purity is greater than 95%.

### SEC-HPLC

Assay Data

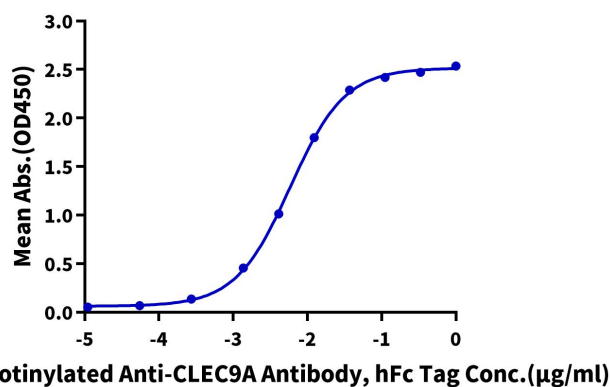


The purity of Human CLEC9A is greater than 95% as determined by SEC-HPLC.

ELISA Data

Human CLEC9A, hFc Tag ELISA

0.05 µg Human CLEC9A, hFc Tag Per Well



Immobilized Human CLEC9A, hFc Tag at 0.5 µg/ml (100 µl/Well) on the plate. Dose response curve for Biotinylated Anti-CLEC9A Antibody, hFc Tag with the EC50 of 5.9 ng/ml determined by ELISA.